

**Full Members**  
“Organisations representing the spectrum of Interests/Stakeholders in the UK forestry, environmental and social community”

**Associate Members**  
“supporter” category.

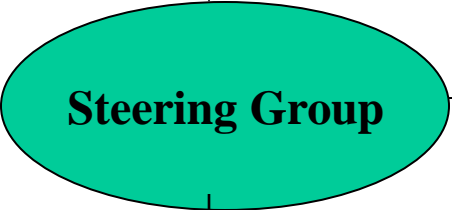


**Members at AGM:**

- elect Company Chairman
- approve accounts
- admit new Members\*
- approve any changes to Memorandum and Articles of Association or operating procedures\*

\*Consensus required for these items

**Appoint**  
According to  
Steering Group rules



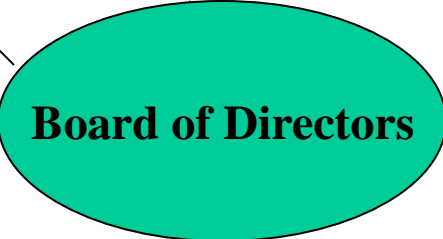
**Steering Group Remit**

- By convention chaired by Company Chair
- Selects single nominee for company Chair
- Appoint Directors
- provides guidance to Members on appointment of new members and membership criteria and subscriptions
- maintain and interpret standard
- protect UKWAS name

**Appoint**  
(3 year term)

**Board of Directors**

The Company Chairman plus four others, by convention, one Director elected from the Steering Group for each of 4 ‘chambers’ (En, Ec, So + “others”) (as per Interpretation Panel). Each ‘chamber’ votes for its own representative only.



**Board Remit**

- ensure good governance of the company
- appoint Company Secretary
- budgetary control
- act on advice of SG on all other matters

*Essentially the Board acts as a Management Committee on behalf of the the Steering Group*